



FIELDWORKS DESIGN GROUP

ARCHITECTURE | LANDSCAPE ARCHITECTURE | GRAPHIC DESIGN

COMPANY PROFILE

VAT Reg: 4650281878

217 18'th Avenue, Deerness

Pretoria, 0084

www.fieldworksdeisngroup.com

admin@fieldworksdeisngroup.com

+27 60 881 0589

WHO WE ARE

We believe that design is inherently optimistic. To take on big challenges, we have to believe that success is inevitable.

OUR STORY

Fieldworks Design Group is an ambitious design collaborative formed in 2015, and has been actively contributing to the world of design through Architecture; Landscape Architecture; Urban Design and Graphic Design. As a collaborative, we form a collective think-tank for young designers eager to explore the possibilities associated with architectural, landscape and urban interventions in the contemporary built environment.

OUR PHILOSOPHY

Fieldworks Design Group, strives towards a coherent and holistic outlook between the different spheres of design, and believes in creating sustainable and resilient environments. Our multi-disciplinary design-approach promotes respectful engagement with the unique nature of each project's intricacies. We value a fluid- and open process throughout the entirety of any commitment, and are firmly grounded in the inherent and inseparable relationship that exists between design and construction.

CORE VALUES & MISSION

We endeavour to create relevant, resilient and sustainable interventions that are capable of positively affecting people's lives in a meaningful way, by creating quality spaces with a strong sense of place, based on our values of **innovation, participation, transparency, diligence and agility.**

Our shared normative position encourages total engagement combined with a comprehensive understanding of design, providing our clients with a product specifically tailored to their needs.

PROFESSIONAL MEMBERSHIP

SACAP - South African Council for the Architectural Profession

SACLAP - South African Council for the Landscape Architectural Profession.



MEET THE TEAM

OUR TEAM

Fieldworks Design Group has a permanent staff of two hands-on directors, working alongside a team of enthusiastic designers. Our personnel hold qualifications in architecture, landscape architecture, urban and graphic design.

OUR DIRECTORS

Director of Landscape Architecture & Urban Design

CHARLDON WILKEN

Landscape Architect & Urban Designer

- BSc(LArch) cum laude University of Pretoria
- BL(Hons) University of Pretoria
- ML(Prof) University of Pretoria
- MUD University of the Witwatersrand

Director of Architecture

ALBERT SMUTS

Architect

- BSc(Arch) University of Pretoria
- BArch(Hons) University of Pretoria
- MArch(Prof) University of Pretoria



SERVICES

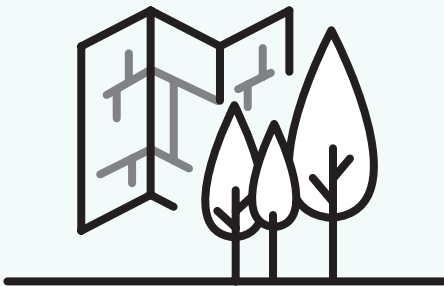
4 DISCIPLINES IN ONE OFFICE

Our team consists of design professionals holding degrees in the disciplines of Architecture, Landscape Architecture, Urban Design and Graphic Design. This mix of expertise allows us to interact comfortably and confidently with projects in each of these fields. At all times, this knowledge is holistically combined and integrated into our projects.

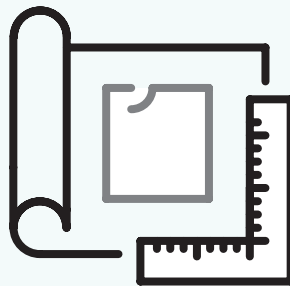
WHAT WE DO

MULTI-DISCIPLINARY INTEGRATION

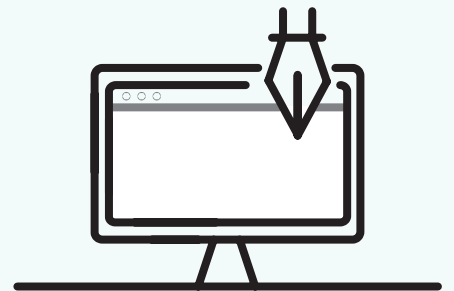
Fieldworks Design Group combines four spatial and visual design disciplines to provide a unique offering to our clients.



LANDSCAPE & URBAN DESIGN



ARCHITECTURE



GRAPHIC DESIGN

RESEARCH & DEVELOPMENT

Fieldworks Design Group prides itself on being an energetic and vibrant young firm always at the leading edge of technology use and software. We have experience in prototyping and operating 3D printing and laser cutting software. Our extensive knowledge on educational models allow the translation thereof to occur in conducive educational spaces. We have gained a comprehensive understanding of efficient and sustainable housing solutions through our exciting body of work on affordable housing and inner city housing projects.



PROJECTS AND REACH

EXEMPLARY PROJECTS

GAUTENG

Johannesburg

Streetlight School - [Jeppestown](#)

VuJaDe Landscaping - [Doornfontein](#)

Marshall Yards - [Marshall Town](#)

The Emerald - [Jewel City](#)

Neighbourgoods Market - [Braamfontein](#)

Mix Cocktail Bar - [Rosebank](#)

Keys Art Mile - [Rosebank](#)

House Adrienne - [Sandown](#)

Creative Human Space - [The Gardens](#)

Rosmin House - [Jeppestown](#)

Orban School - [Westdene](#)

Qurtoba Islamic Academy - [Linbro Park](#)

Archer Crossing - [Tembisa](#)

Rhema South Family Church - [JHB South](#)

Bjala Square - [Jeppestown](#)

Pretoria

Soshanguve Development - [Soshanguve](#)

House Smuts - [Rietvalleirand](#)

Huis Mooikloof - [Mooikloof Estate](#)

Kinglsey Center - [Pretoria CBD](#)

North West

House Vermont - [Broederstroom](#)

Limpopo

The Doors Inn - [Mokopane](#)

KwaZulu-Natal

Ethekwini Primary School - [KwaMashu](#)

Dr. J.L. Dube High School - [KwaMashu](#)

Eastern Cape

Wavecrest Hotel Expansion - [Transkei](#)

Western Cape

House Van Zyl - [Hermanus](#)

House Kloes - [Knysna](#)

Welmoed Estate - [Stellenbosch](#)

International

Aramness Gir - [India](#)

Tanzania Container School - [Tanzania](#)

PROMINENT CLIENTS

iThemba Properties

Streetlight Schools

CottonOn Foundation

TomorrowCo.

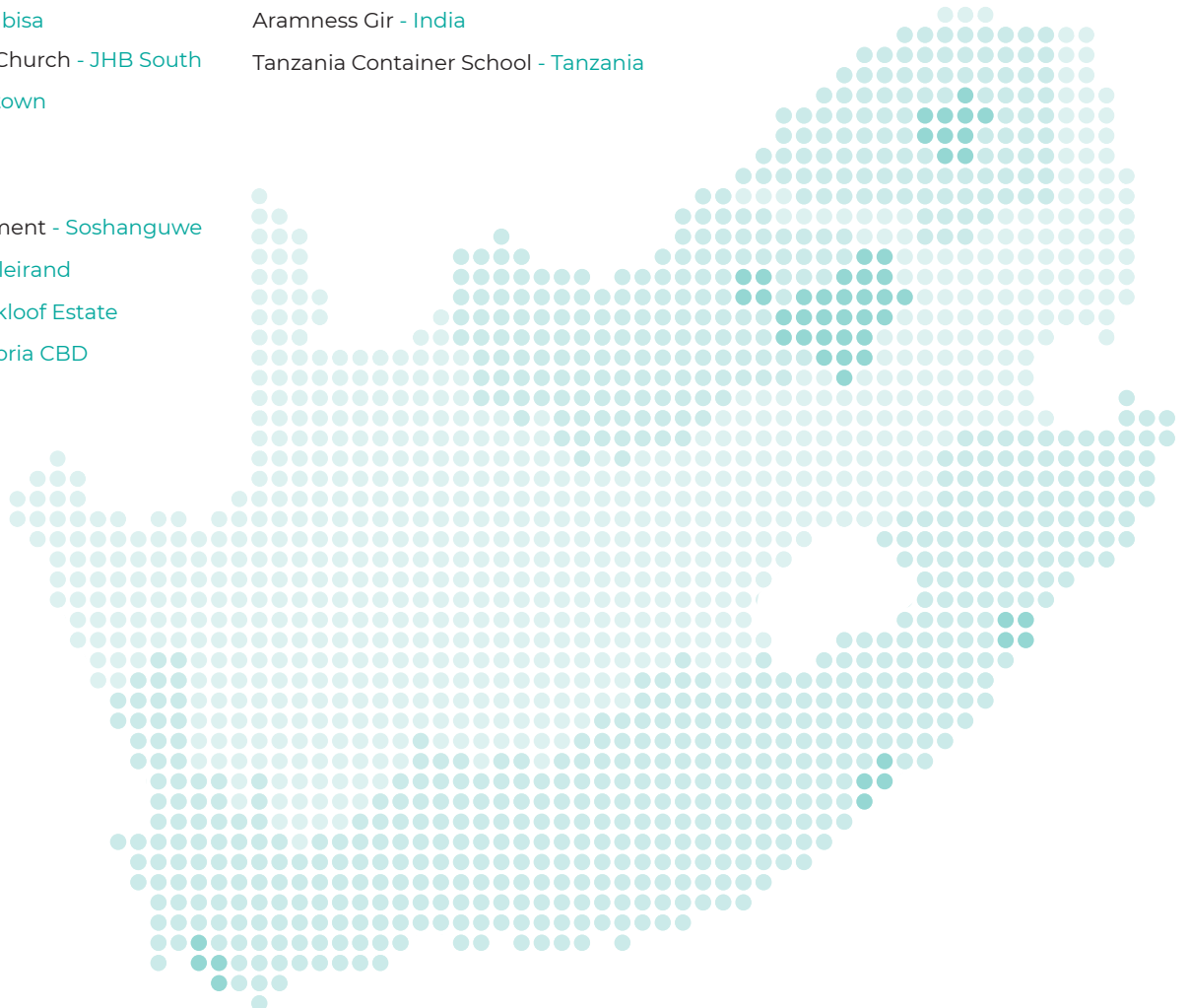
Solid Green Consulting

Rhema

Bjala

Hauwei

IHS



PROJECTS

URBAN DESIGN

URBAN FRAMEWORKS

Fieldworks Design Group is involved with the design of a number of urban frameworks in and around Johannesburg. These focus on the large-scale planning and development of neighbourhoods as well as sensitive small-scale interventions.

MARSHALL YARDS JOHANNESBURG

As a result of the project scale, its proximity to the CBD of Johannesburg, and the post-industrial nature of the site, the project calls for an integrated approach to design. It is of paramount importance to create social, recreational and retail spaces around these buildings, reviving the dilapidated urban fabric. The design of thresholds, urban edges, and storm-water management through vegetated swales form part of the revival strategy.



BJALA NEIGHBOURHOOD JEPPESTOWN, JOHANNESBURG

The Bjala Neighbourhood in Jeppestown is situated close to the CBD of Johannesburg. This former industrial area now houses many residents seeking job opportunities in the surrounding areas. The aim is to create a sustainable, walkable neighbourhood based on the core principles of healthy urban districts and the integration of economic, social and environmental factors.

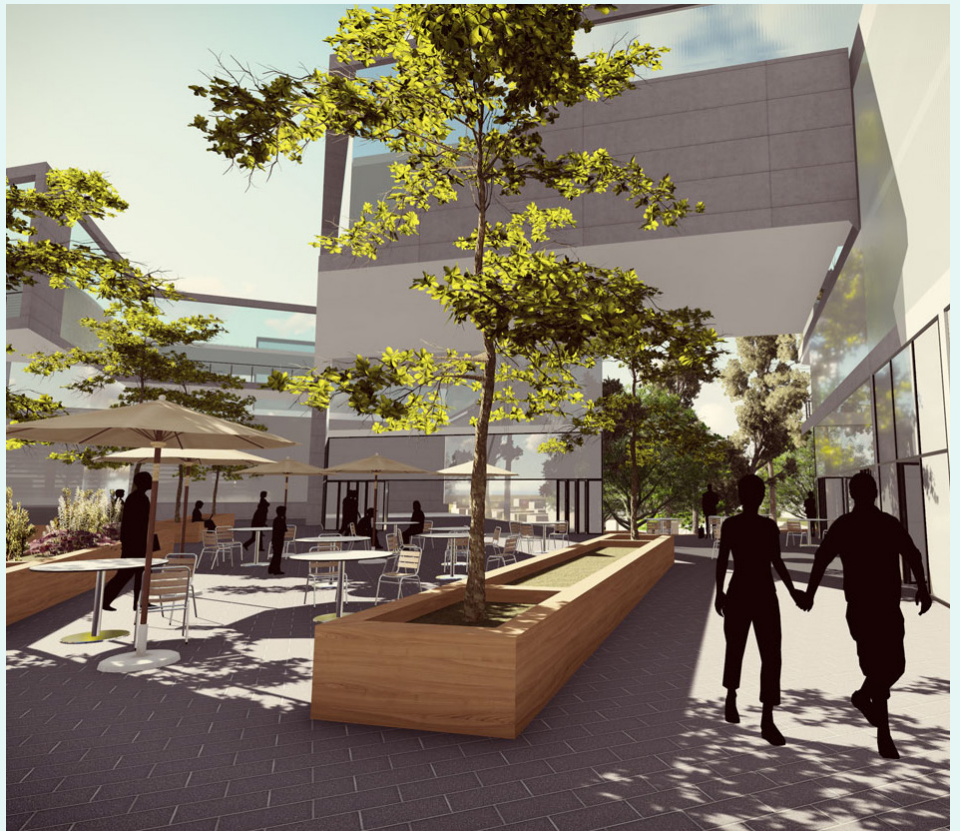
**LARGE BUILDINGS &
URBAN GREENING**

Due to the extensive scale of many of Fieldworks' projects and our disciplinary integration, urban greening forms part of many design strategies.

**THE GARDENS
DEVELOPMENT
NORWOOD,
JOHANNESBURG**

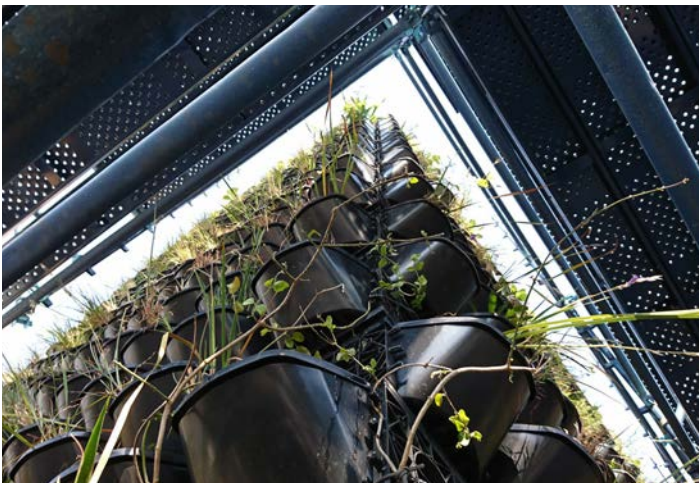


The focus area for this project is situated in The Gardens, Johannesburg. This vibrant residential neighbourhood is situated between Melrose Arch and Houghton. A series of intuitive interventions are proposed to ensure successful growth in residential, commercial and environmental departments.



KEYES ART MILE

A vital component in creating a sustainable development is understanding and selecting appropriate vegetation for the area. Not only does this selection aid in the creation of a lowmaintenance and water-wise landscape, but it contributes to the creation of niches for biodiversity and acts as vessels for carbon sequestration. The award winning Keyes Veld Wall forms part of the greater greening strategy for the Keyes Art Mile.



HOUSE SMUTS RIETVALLEIRAND, PRETORIA

A strong premise for systems design manifested within the design solution. It is based primarily on the strategic use and recycling of water. A grey water recycling system, in the form of an on site wetland, is responsible for water purification and reuse.



THE DOORS INN MOKOPANE, LIMPOPO

The Doors Inn is located in Limpopo. Fieldworks Design Group was employed to establish a architectural identity throughout the guest house and property and landing experience, the approach was to design through the use of sustainable architectural and landscape architectural elements.

RHEMA SOUTH FAMILY CHURCH ALBERTON

To accommodate the growing congregation at Rhema South, new facilities were required. The expansion presented an opportunity to revitalise the existing building facade, and create a contemporary place of worship for the Rhema South congregation. Natural stone, muted colours, and expansive glass openings framed with the introduction of lush indigenous vegetation reflective of the surrounds encompass the aesthetic.



WELMOED ESTATE

Welmoed Estate and the proposed site for development is located in the Cape Wine-lands, close to Stellenbosch. Fieldworks Design Group had been engaged to create comprehensive property plans that provide a phasal solution for the rapid renovation of existing buildings, general landscaping research and management approaches to facilitate economical, environmental and social development for the future of the site.

ETHEKWINI PRIMARY SCHOOL KWA-MASHU, DURBAN

The master plan for the school aims to make use of space as efficiently as possible. The layout suggest the formalisation of access points and major movement routes. The design of new buildings advocates for the up-cycling of building materials in order to be environmentally responsible.

The project endeavours to create a healthy and sustainable environment conducive to education.



QURTUBA ISLAMIC ACADEMY LINBRO PARK, JOHANNESBURG

The school needed new classroom spaces that could, in future, be used for other purposes. Situated on a small site between a soccer field and new housing complex, this building makes use of it's surrounds to act as visual anchor and is able to double as a viewing deck for football matches.

STREETLIGHT SCHOOLS JEPPESTOWN, JOHANNESBURG

The spatial implementation at StreetLight Schools, Jeppestown aims to create an adaptive, low cost built form, merged with the requirements of a high technology learning model. This takes the form of a multi-functional learning space for stimulating the developing youth. There was little to no material wastage as a result of innovative re-use and construction using standard material sizes. The school provides new and exciting opportunities to children in the area and is transforming Jeppestown in a positive way.



Streetlight Schools - GREEN STAR RATING

The design of StreetLight Schools, Jeppestown involved the reuse of existing and salvaged material available on site e.g. wood palettes, timber doors and reclaimed furniture. This, paired with little to no material wastage from new standard sized material implementations, created an exciting educational space for learning and earned the school a 4 star green star interiors rating, the first school in South Africa to do so.



HIGH DENSITY RESIDENTIAL

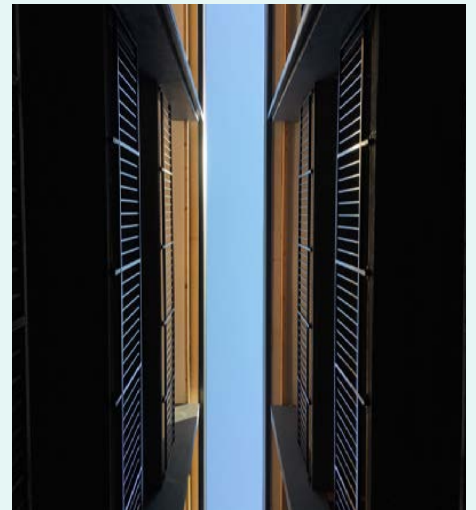


THE EMERALD JOHANNESBURG

The Emerald (32 Greene Street) is an 8+ storey residential development in Johannesburg - the first 8 storey building to be constructed in JHB CBD in the past 40 years. This project contributes not only to the creation of affordable housing offerings within our urban centers, but helps to promote density and good urban fabric within the City of Johannesburg. Ground floor retail activates the street edge, while secured parking is offered within.

MARSHALL YARDS JOHANNESBURG

The Marshall Yards development focuses on creating a suitable urban intervention with the heart of Johannesburg. The buildings fully implement various urban design principles that are necessary for good form making with cities. It is of paramount importance to create social, recreational and retail spaces around these buildings, reviving the dilapidated urban fabric. Marshall Yards strives to become the archetype for what inner city housing can achieve.



HIGH-DENSITY HOUSING IN JEPPESTOWN JOHANNESBURG

Fieldworks is currently engaged in the adaptive re-use of five buildings in the Bjala neighbourhood in Jeppestown, Johannesburg. These projects involve the addition of new residential units as well as mixed-use programming.



RESIDENTIAL ARCHITECTURE

HOUSE SMUTS RIETVALLEIRAND, PRETORIA

This residential project occupies a unique site, as it is situated on a plot overlooking a constructed wetland system. This provided the design team with opportunities to frame views and promote the natural landscape. A strong premise for systems design manifested within the design solution.



HOUSE VERMONT BROODERSTROOM, NORTH WEST

In association with Prof. Ora Joubert

The entire house has been designed to take advantage of the magnificent view. The slanted roof here provides for not only rain water harvesting but for photovoltaic cells which integrate in an off the grid design, where water filtration, through the use of filter beds, a natural swimming pool and several water plants as well as electricity are all produced and managed on site.



DESIGN BUILD



STREETLIGHT SCHOOLS - phase I

The StreetLight Schools Education Laboratory, in the heart of the city, is developing low-cost best practices in learning and teaching. Based in Bjala square, the learning centre has rapidly expanded into a complete school. Fieldworks Design Group created an adaptable, low-cost interactive learning environment forming spaces that would not only assist but also enhance the school curriculum followed by Streetlight Schools, Jeppestown.



ETHEKWINI CONTAINER

Fieldworks Design Group was requested to design a mural that would be painted onto the side of the container used by the Ethekwini Primary School as a Library. The school being located in a Zulu community, inspiration was taken from the Zulu culture in their craft skills in bead work, basketry being respectful of the meaning that different shapes as well as colours play in their crafts. As a celebration of Mandela day the Fieldwork team decided to get their hands dirty as they took charge of painting the container.



COMMUNITY DESIGN

ASIKHULUME NGEZINDLU

Asikhulume Ngezindlu, Zulu for “let’s talk about housing”. It’s a collaborative, community-based design partnership which involves community members in the design of affordable, dignified housing in Jeppestown. Fieldworks Design Group founded Asikhulume Ngezindlu in 2015 in partnership with Bjala and the residents of Jeppestown.



DR. JL DUBE HIGH SCHOOL REVIVAL WORKSHOP

The Dr. JL Dube community workshop is the result of a collective effort between Fieldworks Design Group and The Cotton On Foundation to facilitate a platform that gives the students and community of Dr. JL Dube a voice on the issues and potential regarding their school. The workshop entailed multiple strategy sessions with students and teachers culminating in an interactive exhibition showcasing the results.



PUBLIC LIFE SURVEY

END STREET PARK DOORNFONTEIN, JOHANNESBURG

The objective of a Public Life Survey is to observe, measure, and quantify daily life within a specified area over the course of a day. Through the careful observation of daily life, the dynamics and set of actors that unfold within the public space provide clues to how its space is negotiated. The premise of the Public Life Survey was to test the hypothesis of whether End Street Park served as an inclusive and diverse space.



NUTRITIOUS FOOD CULTURE

The product and packaging design for Nutritious Food Culture entailed the packaging design for products offered by the company. As Nutritious Food Culture is grounded in delivering wholesome edible products and recipes that improve cognitive health, the Fieldworks team endeavored to embody these principles as part of the product and packaging design strategy.

AppRae



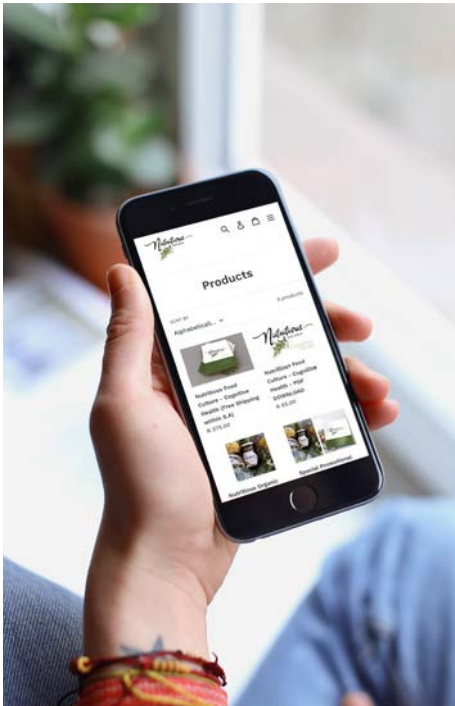
FRONT



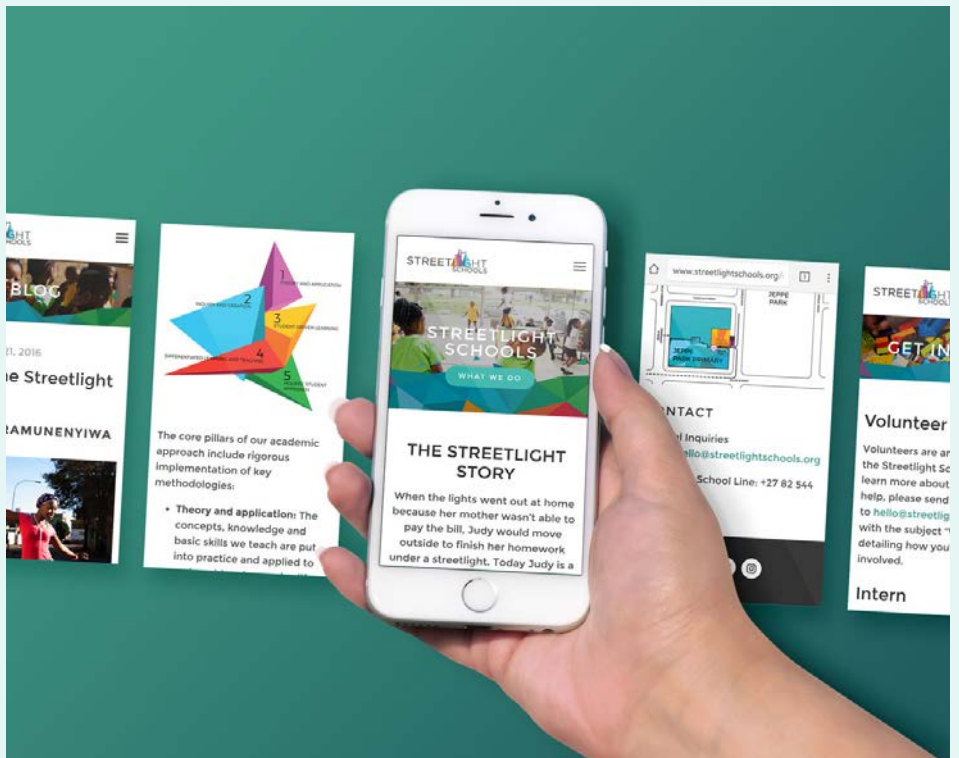
BACK



NUTRITIOUS



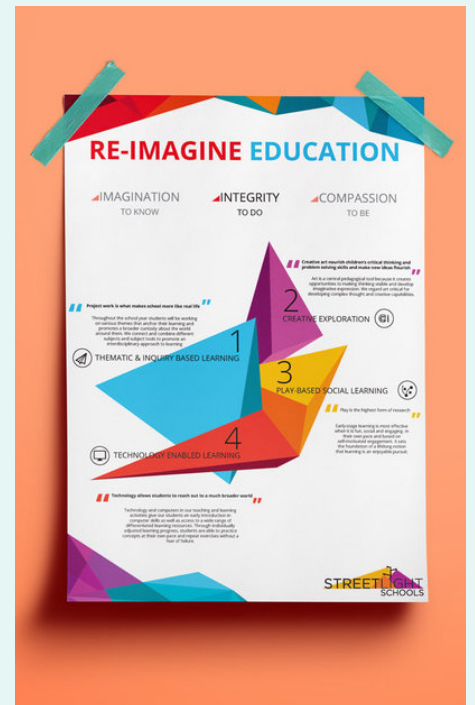
AppRae



Asikhulume Ngezindlu



STREETLIGHT



AJ SMUTS | C WILKEN